



estos

enables easy communication



MetaDirectory

LDAP server for easy access to contact data



MetaDirectory – really huge!

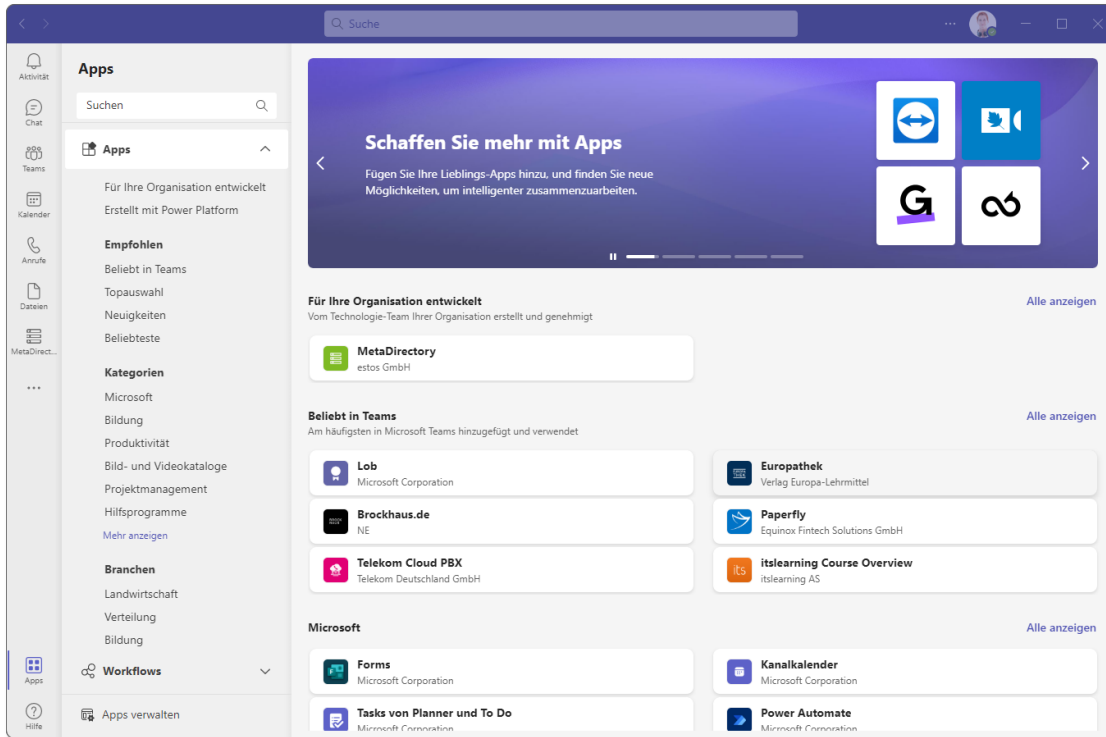
MetaDirectory 5 Enterprise highlights

MetaDirectory 5 Enterprise – contact data

- Consolidation of existing, distributed contact data resources into a **company-wide information service based on LDAP**.
- **Standardized preparation** of names, addresses, phone numbers, images and customer-specific information for efficient and individual searches in contact databases.
- Using the import replicators, **any number of source databases** can be connected and their contact data records read out.



MetaDirectory 5 Enterprise – MS Teams app



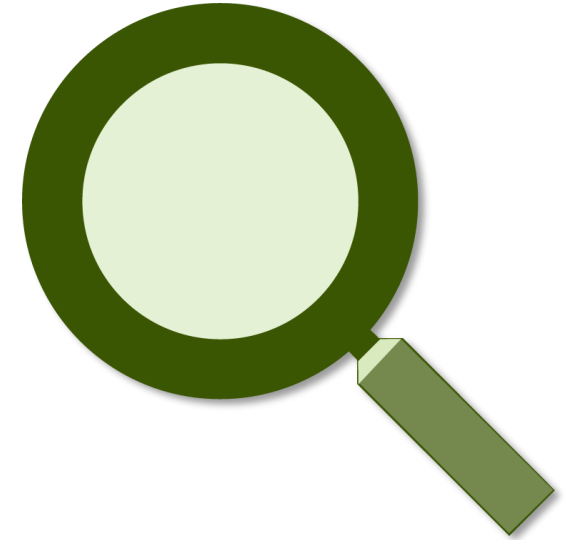
Web server as a Microsoft Teams app

- Contact search
- Phone number search
- Select from search result
- Various further URL calls such as "mailto:"
- Optional: Business process integration (BPI)

MetaDirectory 5 Enterprise – search in contacts

"Search experience" through full-text search

- Search in a familiar way as with modern search engines.
- Now searches are even faster, even with large databases.
- The existing parameterized search is retained.



Contact merge

- Search results from different data sources are displayed together as one contact.
- The criteria for merging can be defined.
- This feature is available in the MetaDirectory web interface.

Contact merge web interface

The screenshot displays a web interface for contact management. On the left, a list of contacts is shown, each with a name, initials, and title. The selected contact, Harald Kurz, is shown in detail on the right. The interface includes a search bar at the top, a sidebar with navigation options, and a main content area with contact details and a 'Contact merge' checkbox.

Contact List:

- HK** Harald Kurz, Partner Manager, SOTSE GmbH
- HV** Heinrich Vogel, Technical Support Specialist, SOTSE GmbH
- HM** Hille Moser, Head of Marketing, SOTSE GmbH
- JH** Jan Herm, Software Developer, SOTSE GmbH
- JF** Jana Frey, Kommunikations Designerin, SOTSE GmbH
- JR** Joachim Rahn, Productmanager, SOTSE GmbH

Contact Details (Harald Kurz):

- Position:** Partner Manager
- Partner Management:** Partner Management
- Abteilung:** Sales
- E-Mail:** Harald.Kurz@sotse.de
- Webseite:** www.sotse.de

Business Information:

- Tel. Geschäftlich:** [+49815163865210](tel:+49815163865210), [+49815136856410](tel:+49815136856410)
- Tel. Mobil:** [+491725647898](tel:+491725647898), [+491728874588](tel:+491728874588)
- Straße:** Petersbrunner Str. 3a
- PLZ:** 82319
- Ort:** Starnberg
- Bundesland:** Bayern
- Bavaria:** Bavaria
- Land:** DE

Home Information:

- Benutzer 0:** Audi A4, Audi A7
- KFZ Kennzeichen:** [Redacted]

Navigation and Settings:

- Quelle:** [Dropdown]
- Sprachauswahl:** [Dropdown]
- Contact merge
- ↑ Liste exportieren
- Info über...

Contact merge MS Teams app

The screenshot displays the MetaDirectory search interface within the MS Teams app. The search results for 'Nadine Neumann' are shown, including contact details and a 'Business' section. A right-hand sidebar contains a list of actions, with 'Contact merge' checked.

MetaDirectory Suche Info

Sucheingabe

Nadine Neumann

NN Nadine Neumann

Active Directory

NN Nadine Neumann
Sotse GmbH

Position
Produktmanagement
Webseite
www.estos.de

Business

Tel. Geschäftlich
[+49 \(8151\) 36856-580](tel:+49(8151)36856-580)
Tel. Geschäftlich 2
[+49 \(8151\) 36856-590](tel:+49(8151)36856-590)

Straße
Petersbrunnerstr. 3a
PLZ
82319
Ort
Starnberg
Bundesland
Bayern

Home

Custom

Benutzer 5
CTI-Server.estos.de

Quelle ✓
Sprachauswahl ✓
 Contact merge
Liste exportieren
Info über...

2 Einträge gefunden

MetaDirectory 5 Enterprise – responsive

New responsive web portal

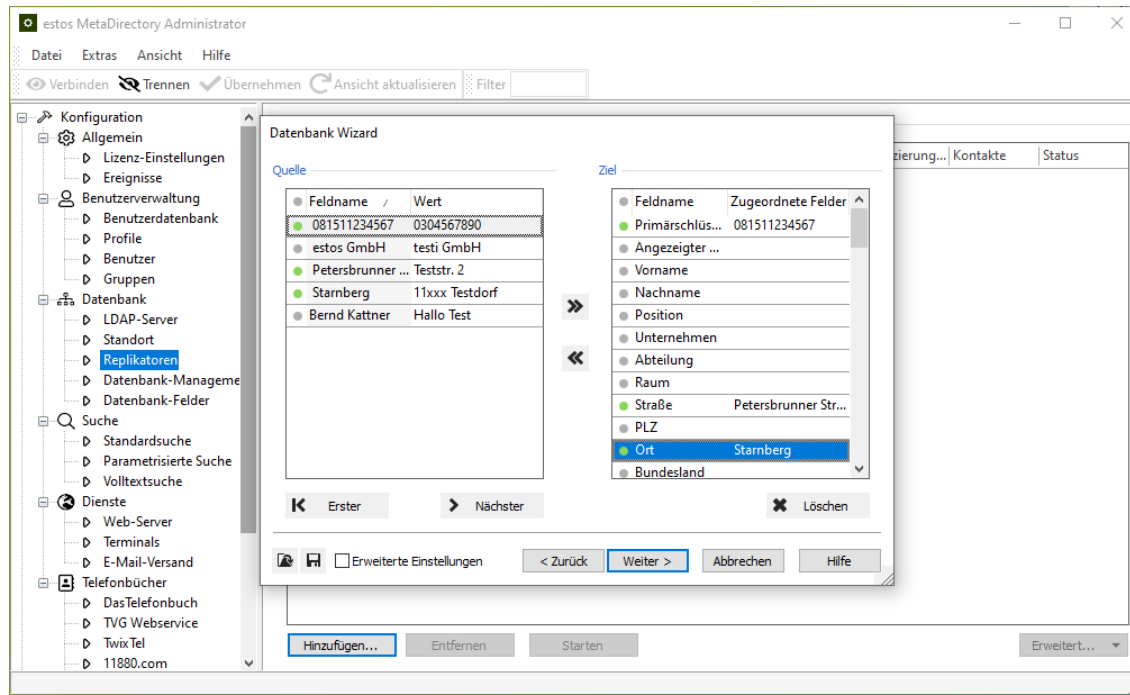
- Completely redesigned web portal.
- Can now be used on all end devices.
- Three different display options.



MetaDirectory 5 Enterprise – configuration

Low installation and configuration effort

- Project-specific assignment via a **field assignment wizard**
(Integration of special company-dependent fields in the search)

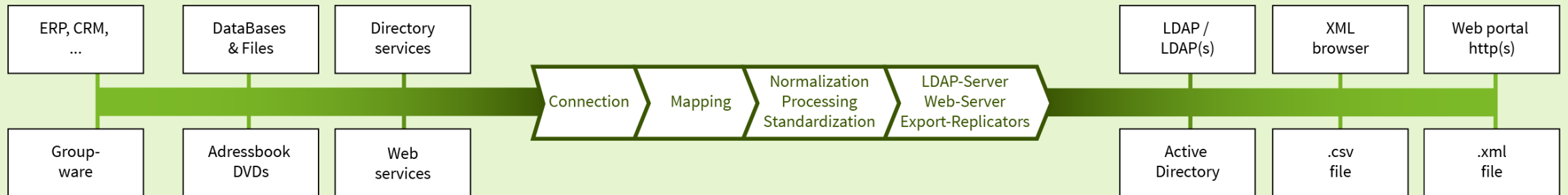




From data to information

MetaDirectory 5 Enterprise replication

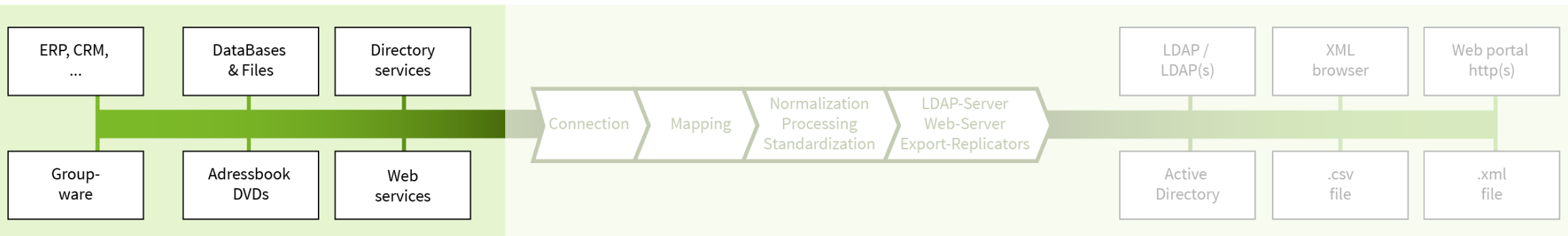
How does MetaDirectory do it?



Import replicators

- ODBC (e.g. Microsoft Access, Microsoft SQL Server, MySQL)
- LDAP (OpenLDAP, NDS, public directory services)
- Active Directory/Global Catalogue
- Microsoft Exchange Web Services (EWS)
- Microsoft Office 365
- HCL Notes (formerly IBM Notes) databases
- G Suite (Google Apps for Work)
- DATEV Basis
- Microsoft Dynamics CRM/Dynamics 365
- Microsoft Dynamics NAV
- Salesforce
- Aranes Akquise Manager
- Exact Online
- DasTelefonbuch des TVG Verlages
- 11880.com (formerly klicktel)
- TwixTel
- Swisscom Directories
- Custom replicator *

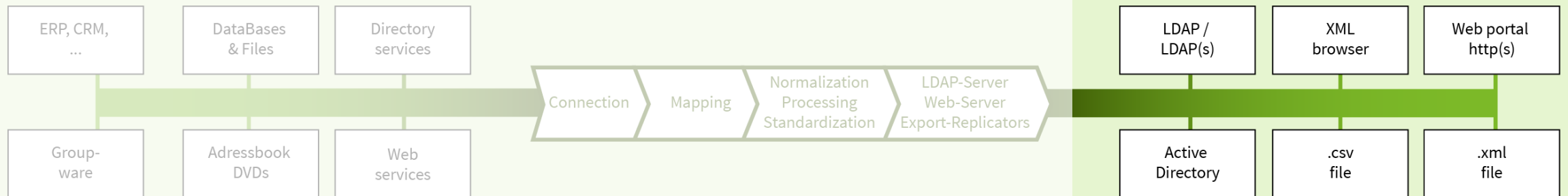
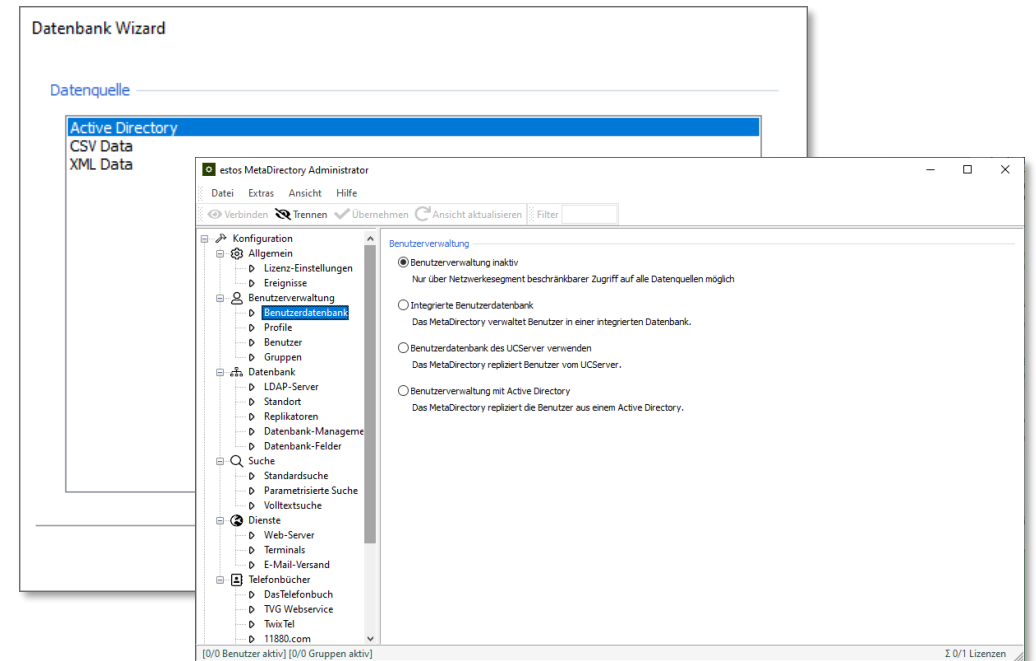
* The custom replicator provides an interface for creating your own replicators. The instructions and a sample project are available on request. Support is provided exclusively within the scope of Professional Service.



Export replicators

- Export replicator for Active Directory® Server
- Export replicator for CSV files
- Export replicator for XML files

Export replicators for writing to CSV/XML files and Active Directory allow easy and automated provision of prepared data to third-party applications.

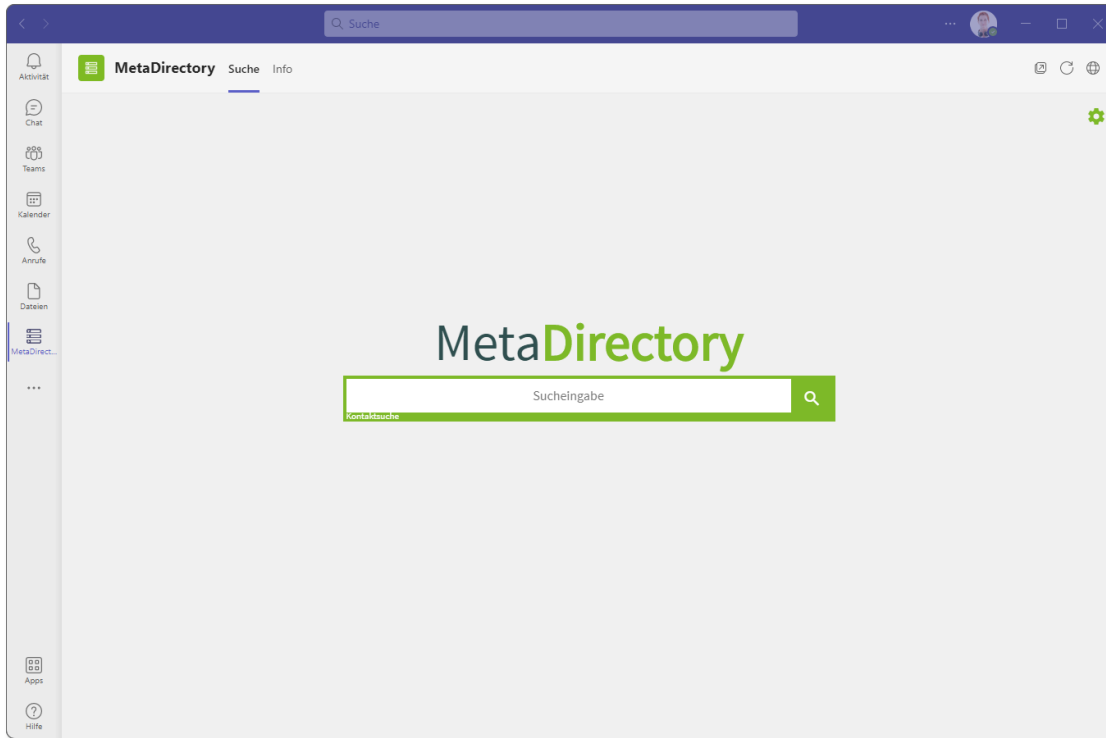




Microsoft Teams app

MetaDirectory 5 Enterprise

MetaDirectory 5 Enterprise – MS Teams app



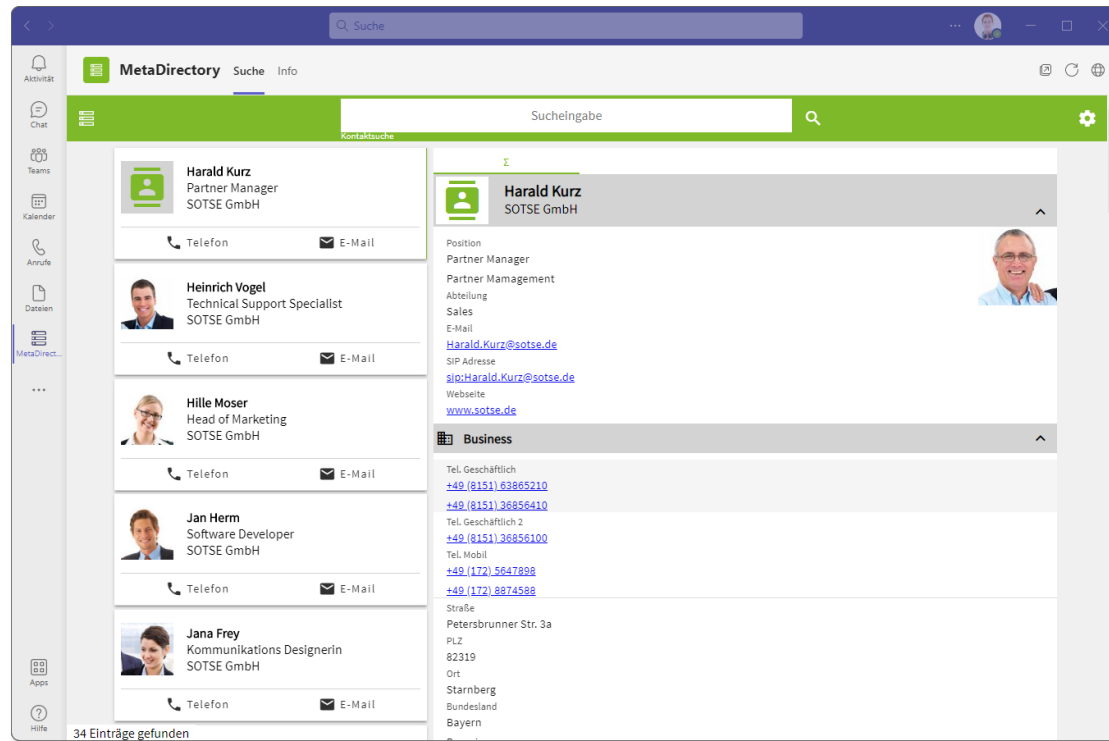
Requirements

- MetaDirectory from Version 5.0.20
- Enabled WebService HTTPS in MetaDirectory
- DNS record and matching trusted certificate in the organization
- Accessibility of the web server from the Microsoft Teams client workstation

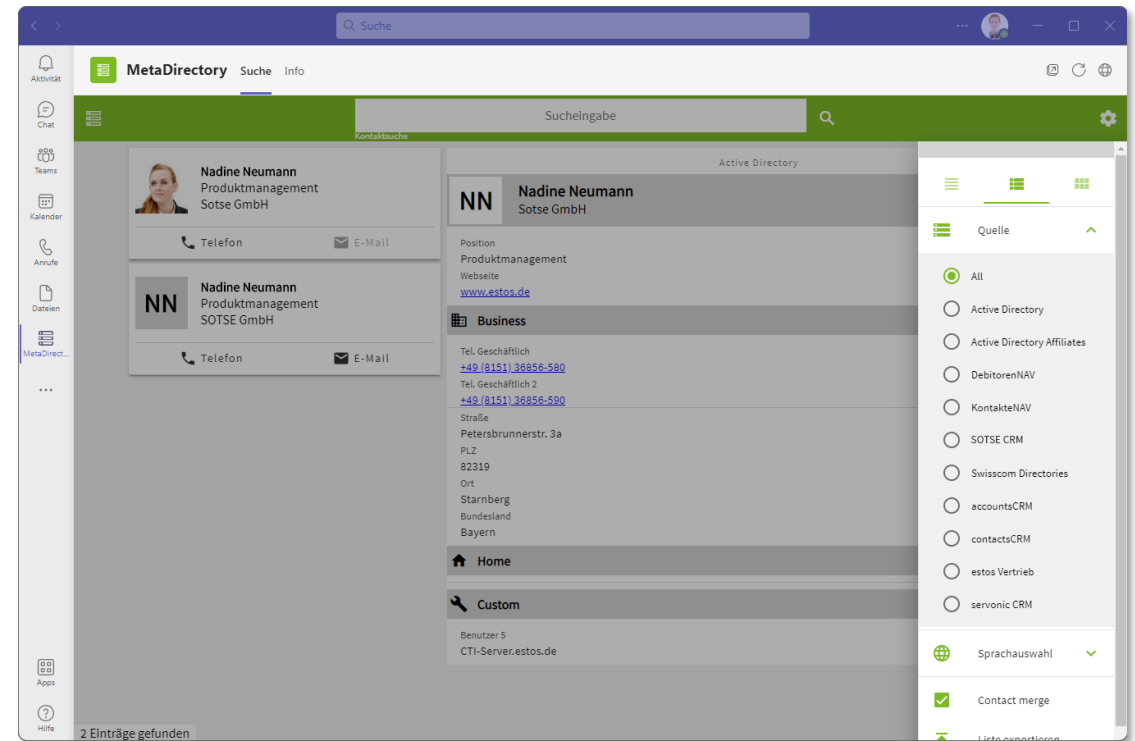
Recommendation: Microsoft Teams Windows desktop client

MS Teams app contact display

Contact display



Selection of data sources



Read the article:

[Set up estos MetaDirectory Teams app and share it within the organization](#)



Phone number resolution in MS Teams

with Session Border Controller and MetaDirectory

Number resolution in Microsoft Teams



- **Company-wide available data** from other applications such as **CRM** or **ERP systems** can be used via the MetaDirectory as LDAP directory service for **call number resolution**.
- Some **Session Border Controllers** like **AudioCodes Mediant** and **anynode** (from version 4.6) from TE-SYSTEMS support the connection via LDAP.



Watch our webinar :
[Number resolution in Microsoft Teams](#)

What you need to implement



- **estos MetaDirectory**
- A Microsoft-certified **Session Border Controller** that allows the connection of an LDAP directory.

The following models are compatible :



- **TE-Systems**
 - anynode (from version 4.6)



- **AudioCodes**
 - Mediant 500L, 500, 800, 1000, 2600, 3000, 4000, 9030, 9080
 - Mediant CE, VE, SE



- **estos Competence Partner:**

In-depth technical know-how on how to set up the LDAP connection of the middleware.



Licensing, project inquiries

MetaDirectory 5 Enterprise

MetaDirectory 5 Enterprise license model & licensing

License model

- User licenses available in packages for **5, 10, 25, 50, 75 and 100 users**.
- Larger license packages (**from 105 users**) are available in connection with a **Project request**.
- **User licenses** can be **extended** by additional packages.

Licensing

- **Every user needs a license**, regardless of whether they access MetaDirectory **directly or indirectly**, anonymously or authenticated.
- Each user can access MetaDirectory in parallel with up to **four different devices** (e.g. UC client, mobile app, desktop terminal, DECT terminal, etc).



Business Process Integration


MetaDirectory and ProCall Enterprise

Personal customer contact






"Good morning Mr. Wagner,
What can I do for you?"

Incomming call [133] → - x

 **Robert Wagner** ▾
+49 (40) 38145157

Media AG
Finkenau 159
20097 Hamburg

 Accept  Reject

 Open CRM Contact

Enter note...

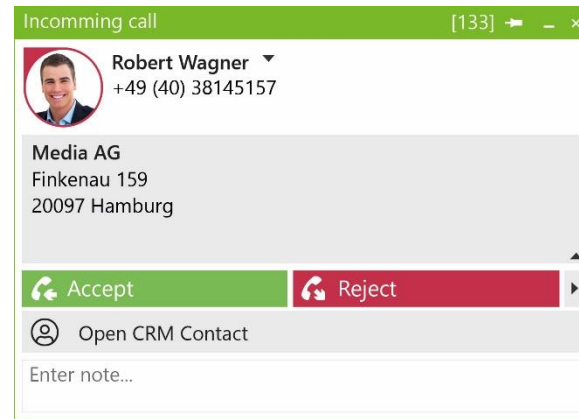
Integration options in accordance with customer requirements



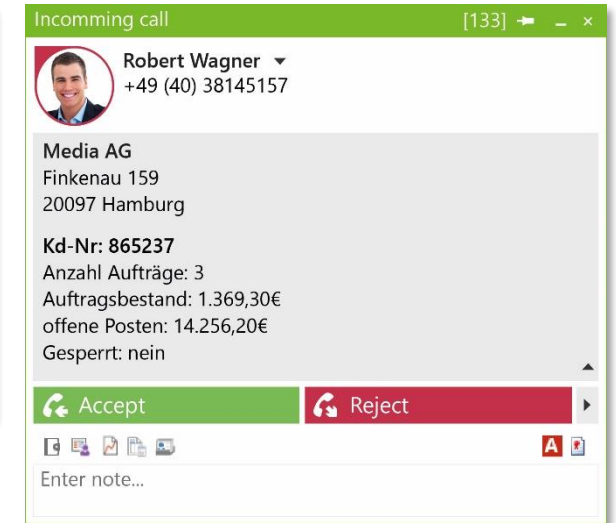
Without MetaDirectory



Contact data integration via MetaDirectory



Simple business process integration with ProCall Enterprise



Complex business process integration as a service



Read the article:
[Plan and implement business process integration](#)

Business process integration



- **Simplification** of business processes
- **Linking** of applications
- **Individual solutions**
- **Interaction with third-party applications** such as CRM/ERP systems



In order to implement business process integration, the system environment (third-party application) and the desired **depth of integration** must be considered in more detail.

Always up to date!

General product information



estos.com/products/metadirectory

estos partner portal and shop

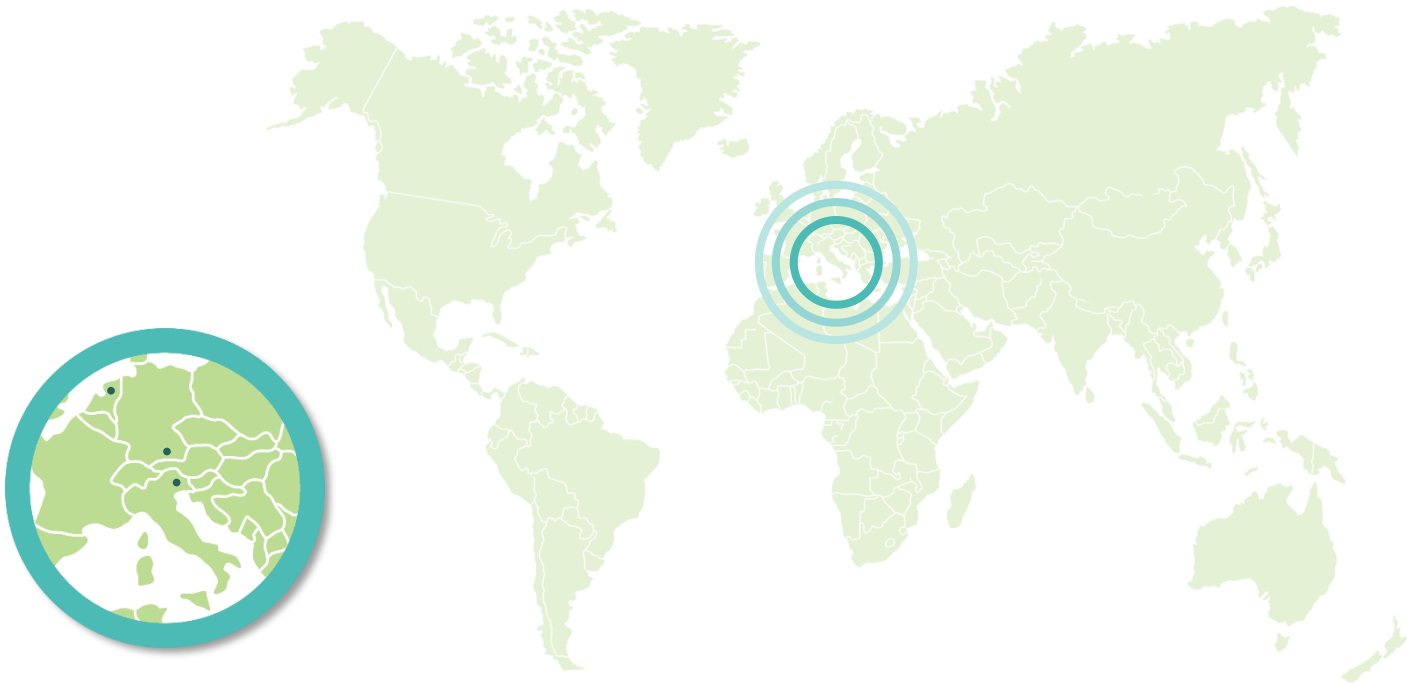


my.estos.de

Technical information



support.estos.de/en



estos GmbH
Starnberg
Deutschland

estos Italia srl
Udine
Italien

estos Benelux BV
Amsterdam-Duivendrecht
Niederlande



[estos.de](https://www.estos.de)



my.estos.de



partner.estos.de



support.estos.de